



# Twinkly Pro™ Branch Tree Assembly Instructions

Up to 60' Heights



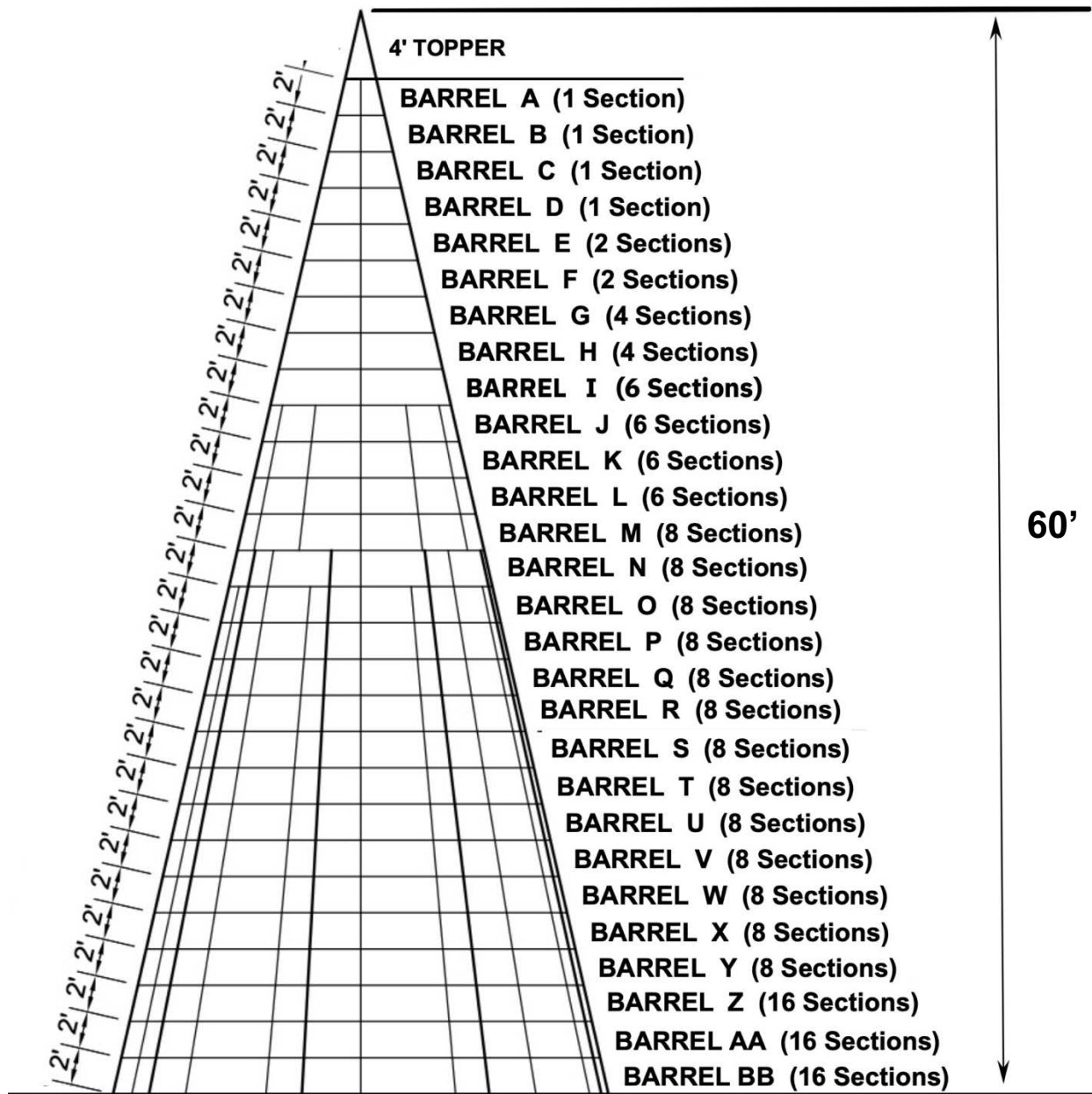




# Twinkly Pro™ Branch Tree Assembly Instructions

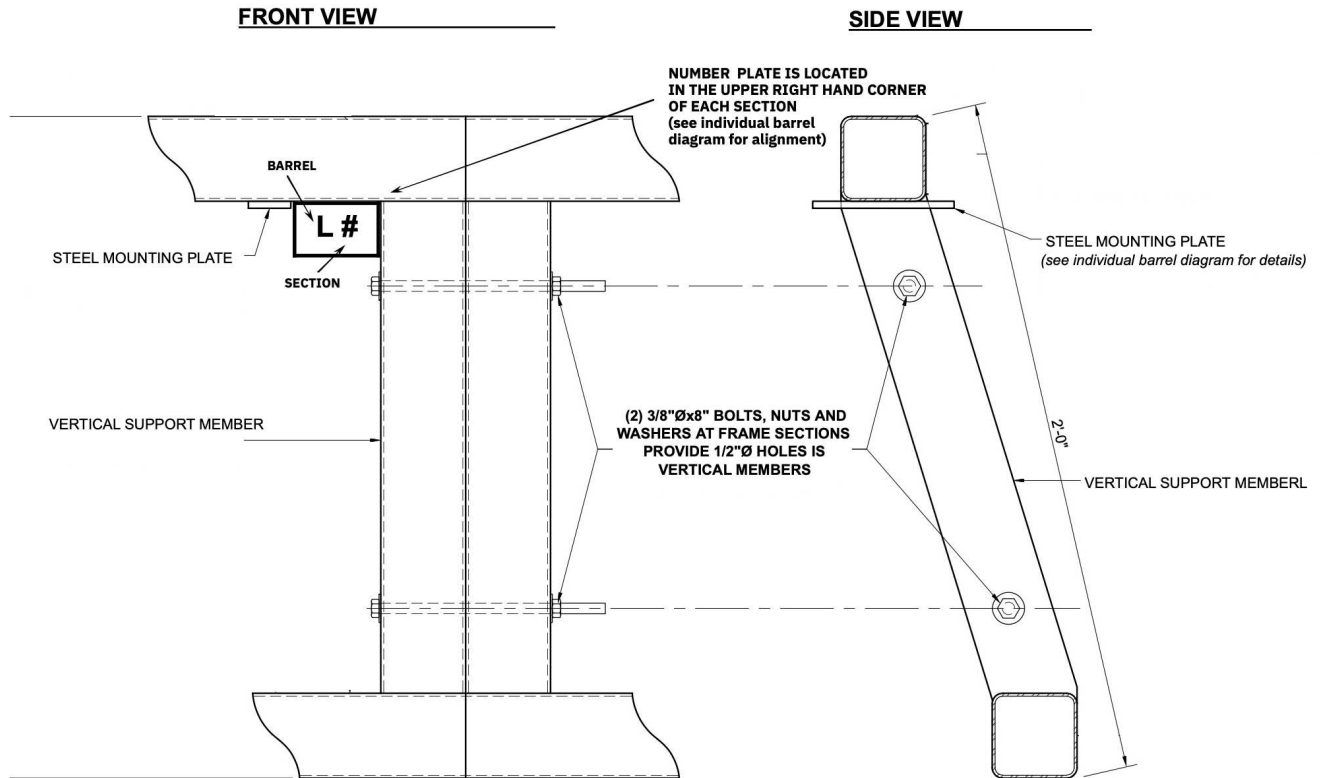


Up to 60' Heights

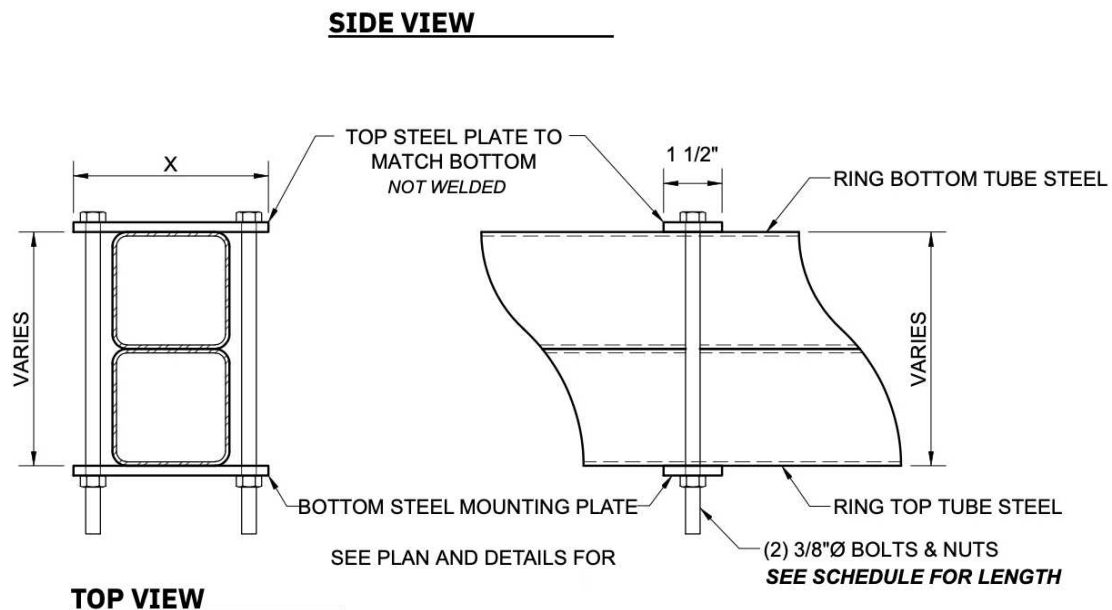


<b>BASE DIAMETER</b>	<b>30'</b>
<b>TOTAL BARRELS (LEVELS)</b>	<b>28</b>
<b>TOTAL FRAME SECTIONS</b>	<b>194</b>
<b>TOTAL BRANCHES</b>	<b>411</b>
<b>TOTAL PIXELS</b>	<b>103,250</b>
<b>TOTAL CONTROLLERS</b>	<b>69</b>
<b>POWER REQUIREMENTS</b>	<b>120A</b>

# SECTION CONNECTION DETAIL

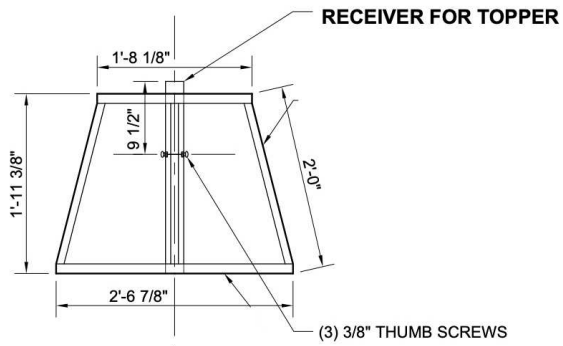


# BARREL CONNECTION DETAIL



## PLATE & BOLT SCHEDULE

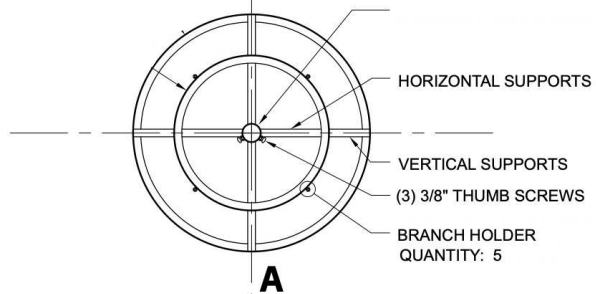
BARREL A TO L: PLATE (X) = 3", BOLT LENGTH = 4"  
 BARREL M TO R: PLATE (X) = 3.25", BOLT LENGTH = 5"  
 BARREL S TO Y: PLATE (X) = 3.5", BOLT LENGTH = 5"  
 BARREL Z TO II: PLATE (X) = 4" BOLT LENGTH = 6"  
 BARREL JJ TO OO: PLATE (X) = 4.5" BOLT LENGTH = 7"  
 BARREL PP TO WW: PLATE (X) = 5" BOLT LENGTH = 8"



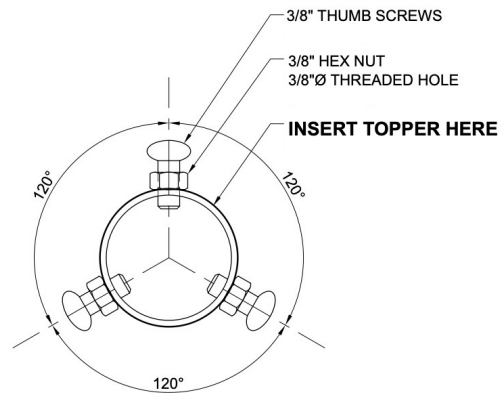
**FRONT VIEW**

## **BARREL - A**

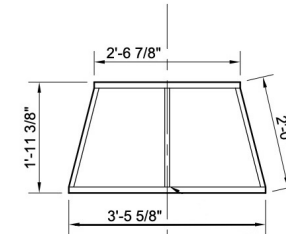
- 1 SECTION
- 5 BRANCHES



**FRAME TOP VIEW**



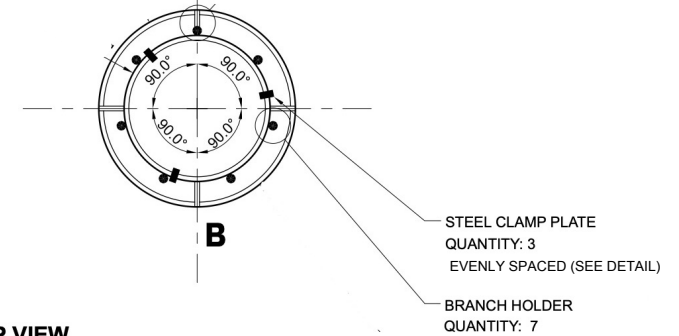
**TOPPER RECEIVER DETAIL**



**FRONT VIEW**

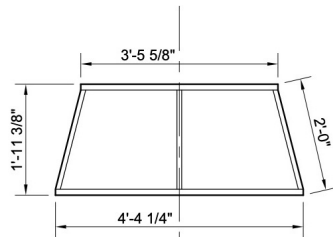
## **BARREL - B**

- 1 SECTION
- 7 BRANCHES



**FRAME TOP VIEW**

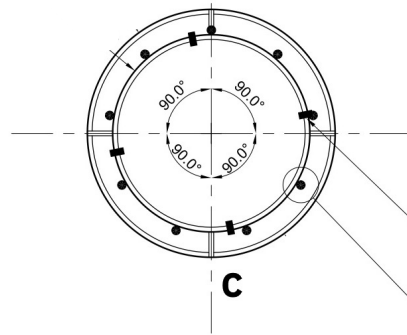




## **BARREL - C**

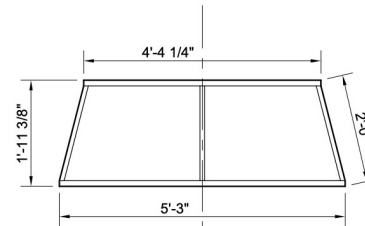
- 1 SECTION
- 9 BRANCHES

**FRONT VIEW**



**FRAME TOP VIEW**

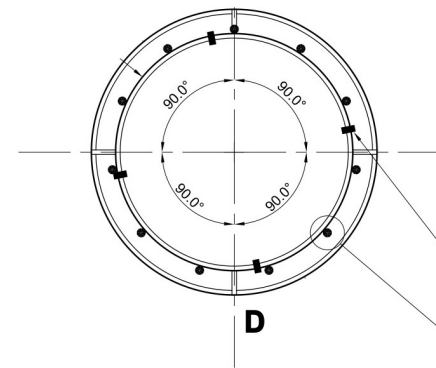
- STEEL CLAMP PLATE  
QUANTITY: 4  
EVENLY SPACED (SEE DETAIL)
- BRANCH HOLDER  
QUANTITY: 9



## **BARREL - D**

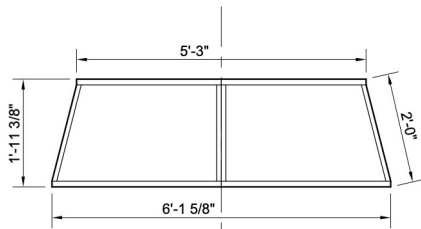
- 1 SECTION
- 11 BRANCHES

**FRONT VIEW**



**FRAME TOP VIEW**

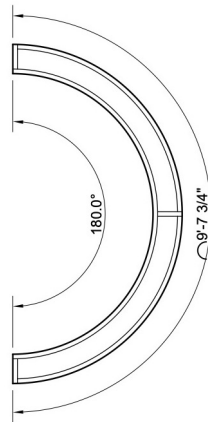
- STEEL CLAMP PLATE  
QUANTITY: 4  
EVENLY SPACED (SEE DETAIL)
- BRANCH HOLDER  
QUANTITY: 11



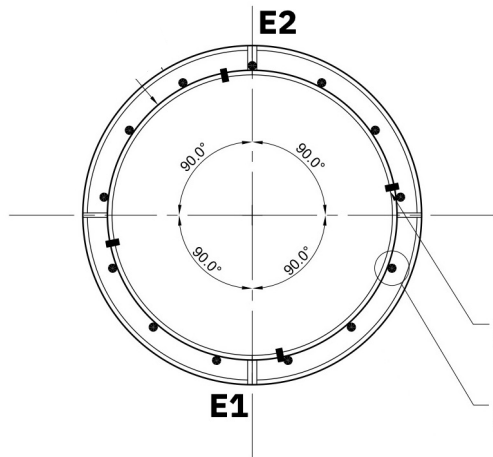
**FRONT VIEW**

## **BARREL - E**

- 2 SECTIONS
- 13 BRANCHES



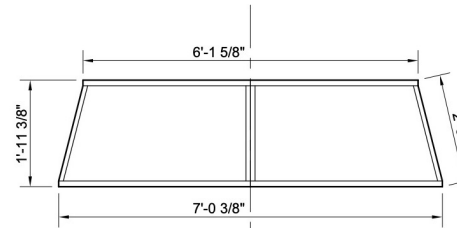
**FRAME SECTION**



STEEL CLAMP PLATE  
QUANTITY: 4  
EVENLY SPACED (SEE DETAIL)

BRANCH HOLDER  
QUANTITY: 13

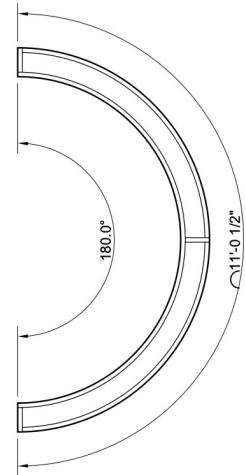
**FRAME TOP VIEW**



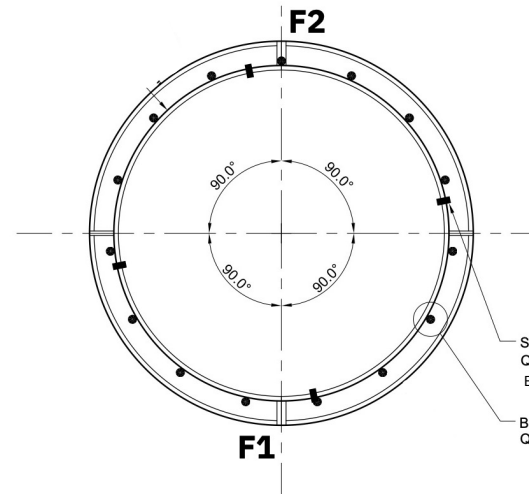
**FRONT VIEW**

## **BARREL - F**

- 2 SECTIONS
- 15 BRANCHES



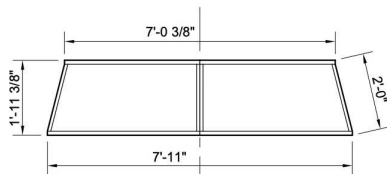
**FRAME SECTION**



STEEL CLAMP PLATE  
QUANTITY: 4  
EVENLY SPACED (SEE DETAIL)

BRANCH HOLDER  
QUANTITY: 15

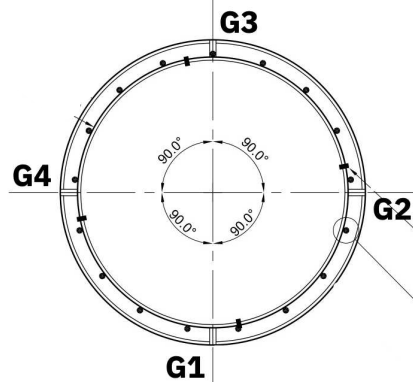
**FRAME TOP VIEW**



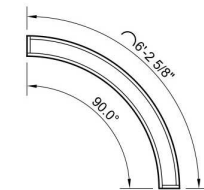
**FRONT VIEW**

## **BARREL - G**

- 4 SECTIONS
- 17 BRANCHES



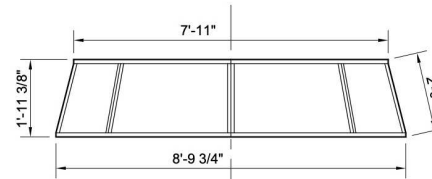
**FRAME TOP VIEW**



**FRAME SECTION**

STEEL CLAMP PLATE  
QUANTITY: 4  
EVENLY SPACED (SEE DETAIL)

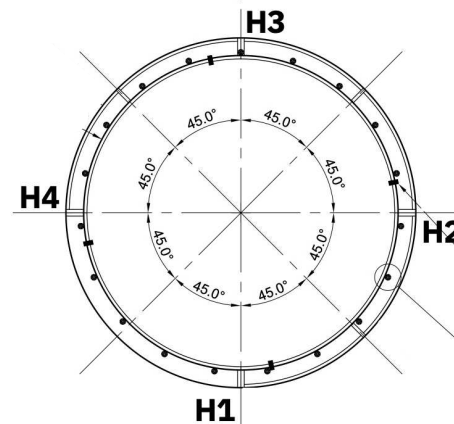
BRANCH HOLDER  
QUANTITY: 17



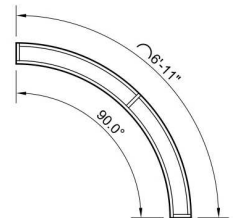
**FRONT VIEW**

## **BARREL - H**

- 4 SECTIONS
- 19 BRANCHES



**FRAME TOP VIEW**

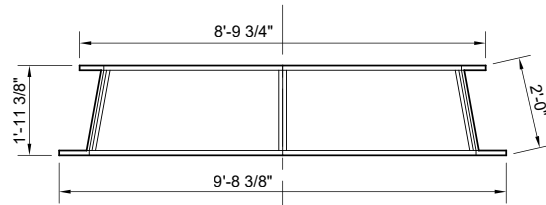


**FRAME SECTION**

STEEL CLAMP PLATE  
QUANTITY: 4  
EVENLY SPACED (SEE DETAIL)

BRANCH HOLDER  
QUANTITY: 19

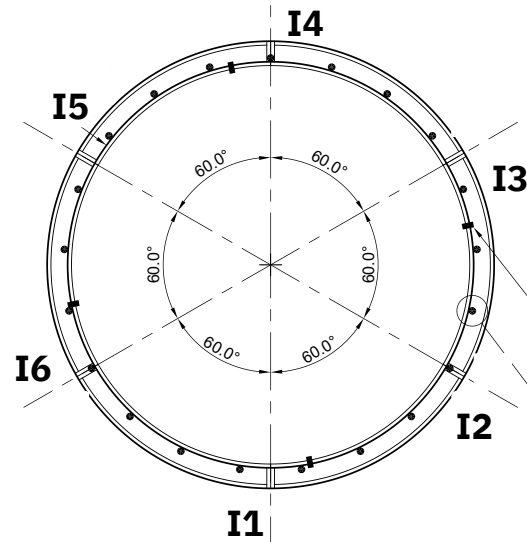




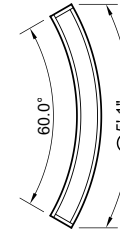
**FRONT VIEW**

## **BARREL - I**

- 6 SECTIONS
- 21 BRANCHES



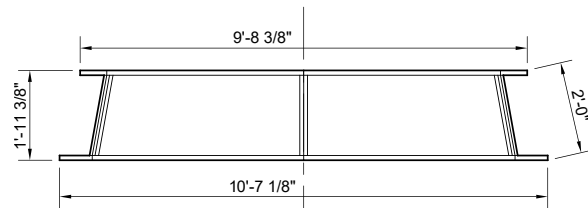
**FRAME TOP VIEW**



**FRAME SECTION**

STEEL CLAMP PLATE  
EVENLY SPACED (SEE DETAIL)  
QUANTITY: 6

BRANCH HOLDER  
QUANTITY: 21

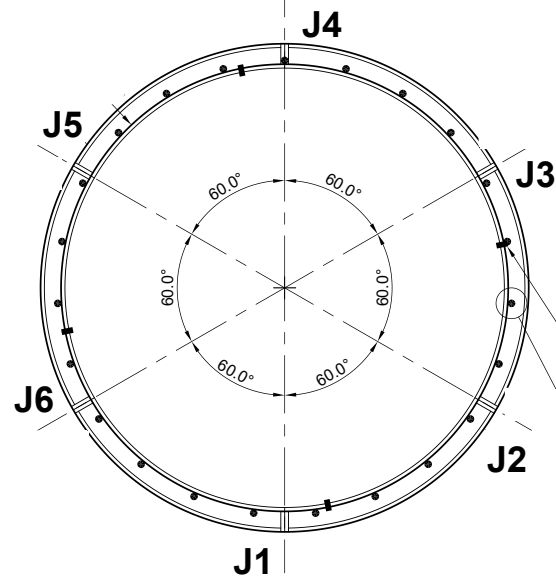


**FRONT VIEW**

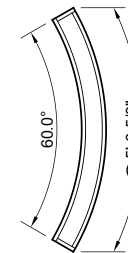
## **BARREL - J**

**- 6 SECTIONS**

**- 23 BRANCHES**



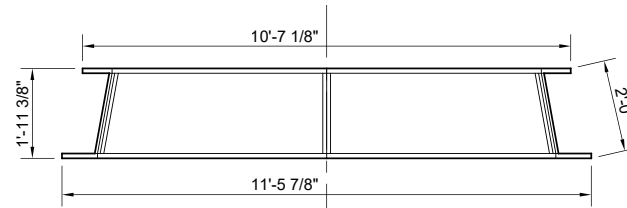
**FRAME TOP VIEW**



**FRAME SECTION**

STEEL CLAMP PLATE  
EVENLY SPACED (SEE DETAIL)  
QUANTITY: 6

BRANCH HOLDER  
QUANTITY: 23

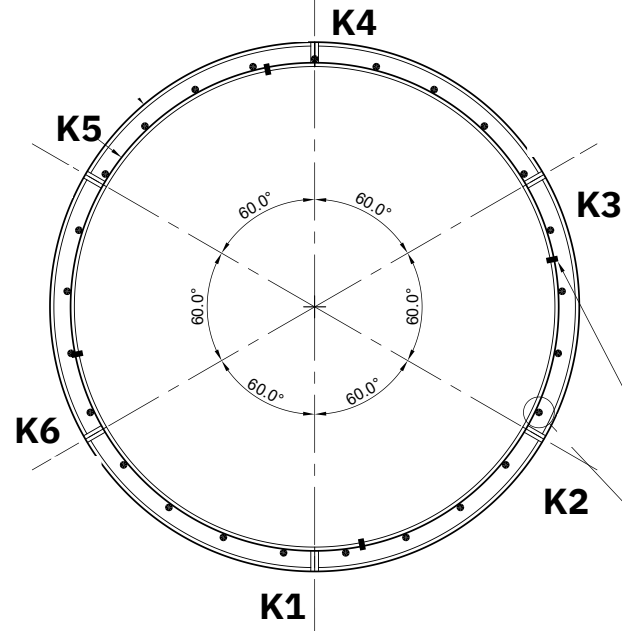


**FRONT VIEW**

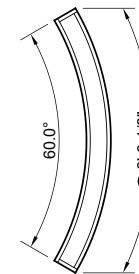
## **BARREL - K**

**- 6 SECTIONS**

**- 25 BRANCHES**



**FRAME TOP VIEW**

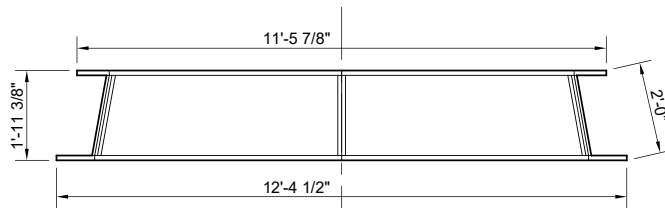


**FRAME SECTION**

STEEL CLAMP PLATE  
EVENLY SPACED (SEE DETAIL)  
QUANTITY: 4

BRANCH HOLDER  
QUANTITY: 25



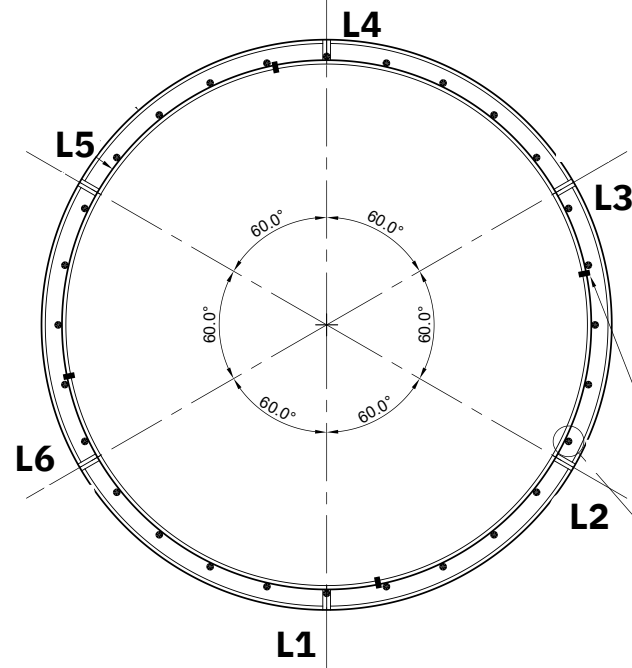


**FRONT VIEW**

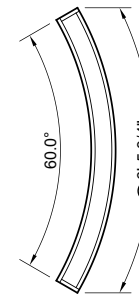
## **BARREL - L**

**- 6 SECTIONS**

**- 28 BRANCHES**



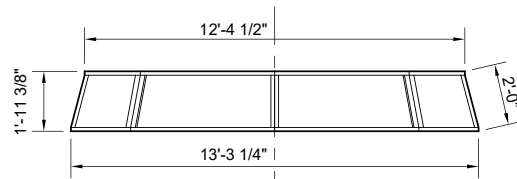
**FRAME TOP VIEW**



**FRAME SECTION**

STEEL CLAMP PLATE  
EVENLY SPACED (SEE DETAIL)  
QUANTITY: 4

BRANCH HOLDER  
QUANTITY: 28

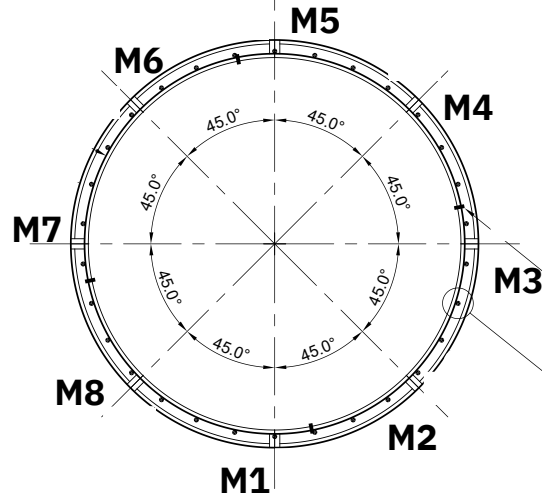


**FRONT VIEW**

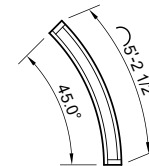
## **BARREL - M**

**- 8 SECTIONS**

**- 30 BRANCHES**



**FRAME TOP VIEW**



**FRAME SECTION**

STEEL CLAMP PLATE  
EVENLY SPACED (SEE DETAIL)  
QUANTITY: 4

BRANCH HOLDER\

QUANTITY: 30



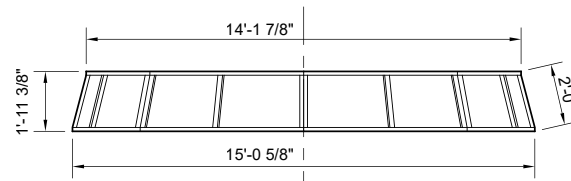
- 8 SECTIONS
- 32 BRANCHES



STEEL CLAMP PLATE  
EVENLY SPACED (SEE DETAIL)  
QUANTITY 4

— BRANCH HOLDER  
QUANTITY 32



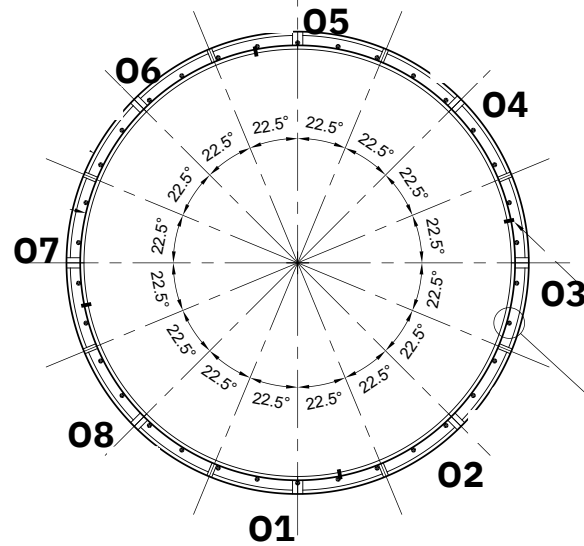


**FRONT VIEW**

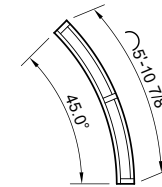
## BARREL - 0

**- 8 SECTIONS**

**- 34 BRANCHES**



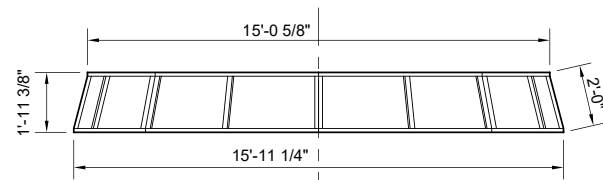
**FRAME TOP VIEW**



### FRAME SECTION

STEEL CLAMP PLATE  
EVENLY SPACED (SEE DETAIL)  
QUANTITY: 4

— BRANCH HOLDER  
QUANTITY: 34

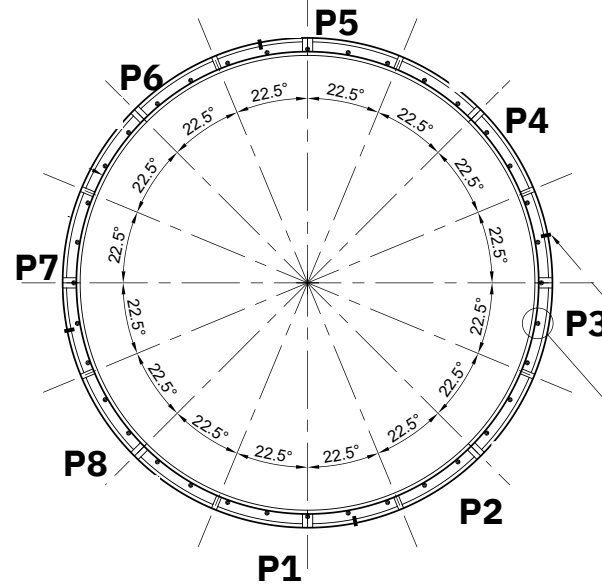


**FRONT VIEW**

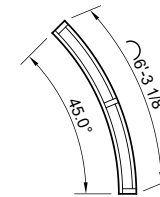
**BARREL - P**

**- 8 SECTIONS**

**- 36 BRANCHES**



**FRAME TOP VIEW**



### FRAME SECTION

STEEL CLAMP PLATE  
EVENLY SPACED (SEE DETAIL)  
QUANTITY: 4

BRANCH HOLDER  
QUANTITY: 36



**- 38 BRANCHES**



BRANCH HOLDER  
QUANTITY: 38





**- 40 BRANCHES**



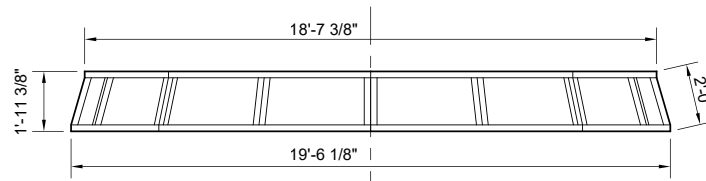
— BRANCH HOLDER  
QUANTITY: 40



**- 42 BRANCHES**



— BRANCH HOLDER  
QUANTITY: 42

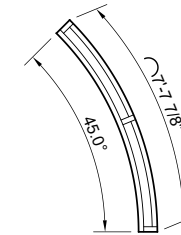
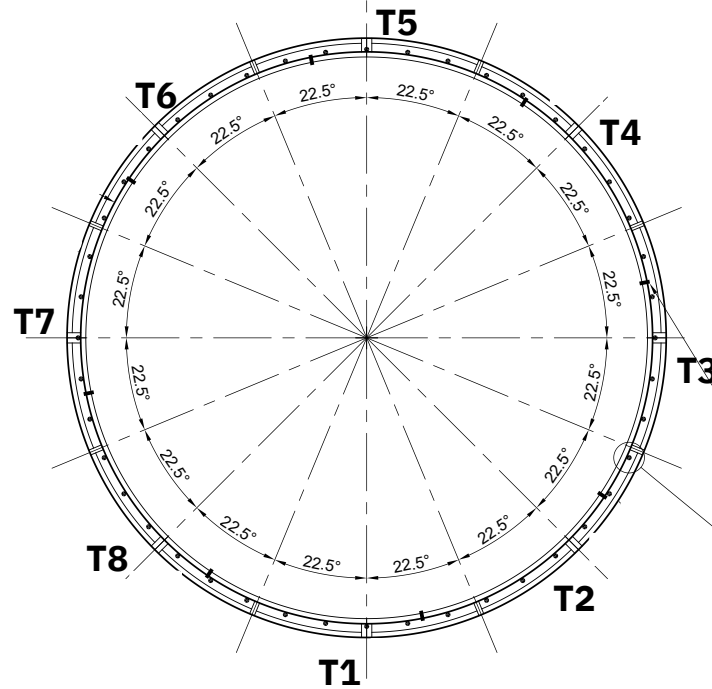


**FRONT VIEW**

## BARREL - T

**- 8 SECTIONS**

**- 44 BRANCHES**



### FRAME SECTION

STEEL CLAMP PLATE  
EVENLY SPACED (SEE DETAIL)  
QUANTITY: 8

— BRANCH HOLDER  
QUANTITY: 44

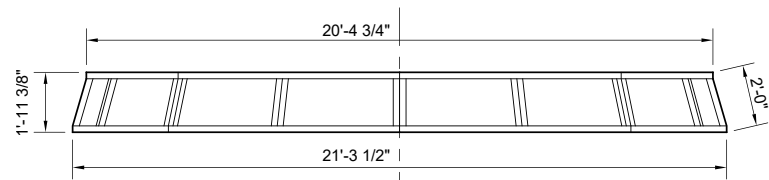
**FRAME TOP VIEW**



**- 46 BRANCHES**



— BRANCH HOLDER  
QUANTITY: 46

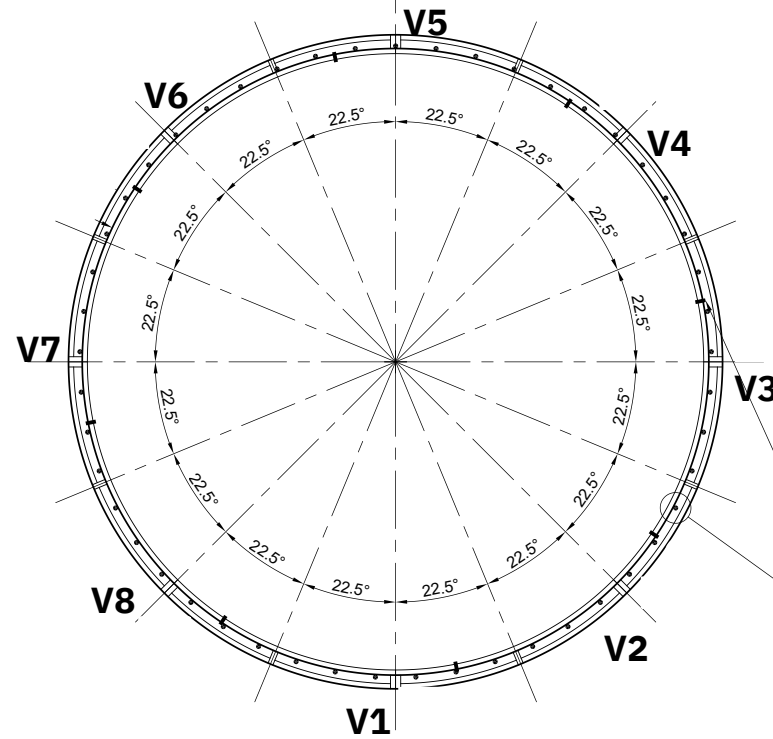


**FRONT VIEW**

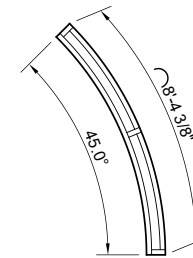
## BARREL - V

**- 8 SECTIONS**

**- 49 BRANCHES**



**FRAME TOP VIEW**



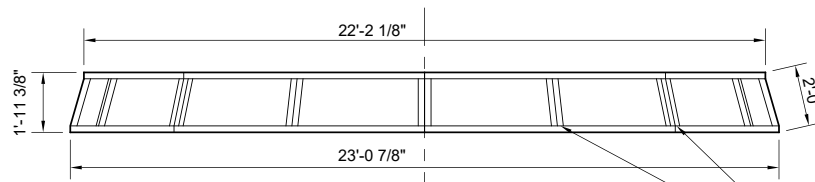
### FRAME SECTION

STEEL CLAMP PLATE  
EVENLY SPACED (SEE DETAIL)  
QUANTITY: 8

BRANCH HOLDER  
QUANTITY: 49





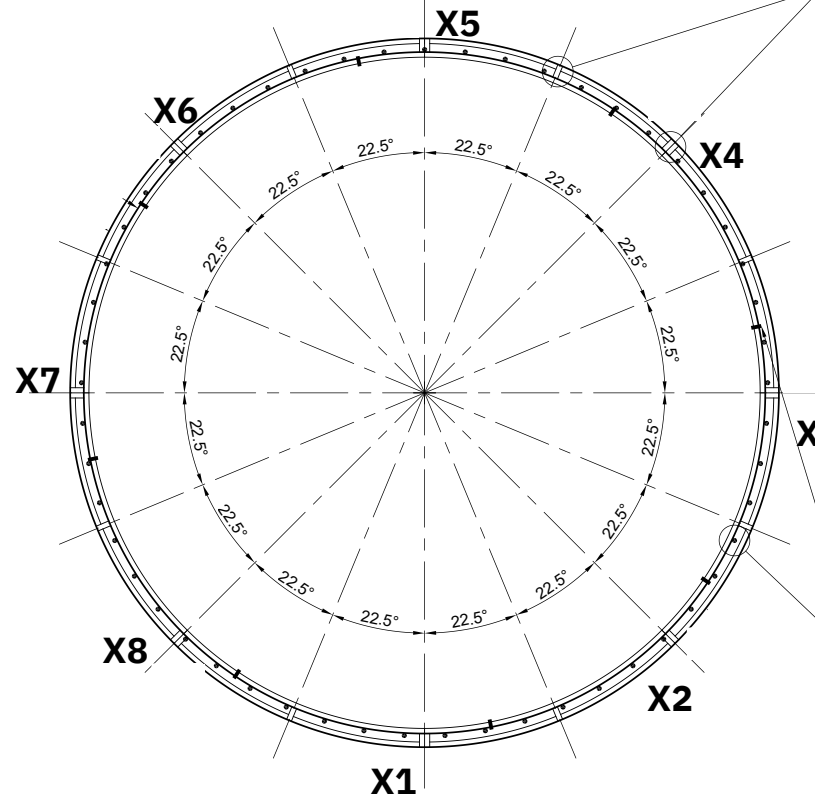


## BARREL - X

**- 8 SECTIONS**

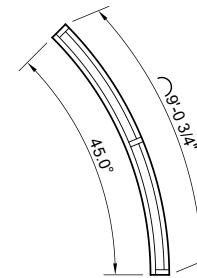
**- 53 BRANCHES**

**FRONT VIEW**



**FRAME TOP VIEW**

— VERTICAL SUPPORTS AT 23.5° O.C.

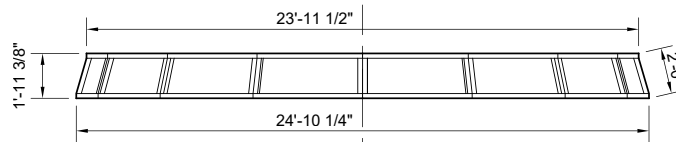


### FRAME SECTION

STEEL CLAMP PLATE  
EVENLY SPACED (SEE DETAIL)  
QUANTITY: 8

— BRANCH HOLDER  
QUANTITY: 53



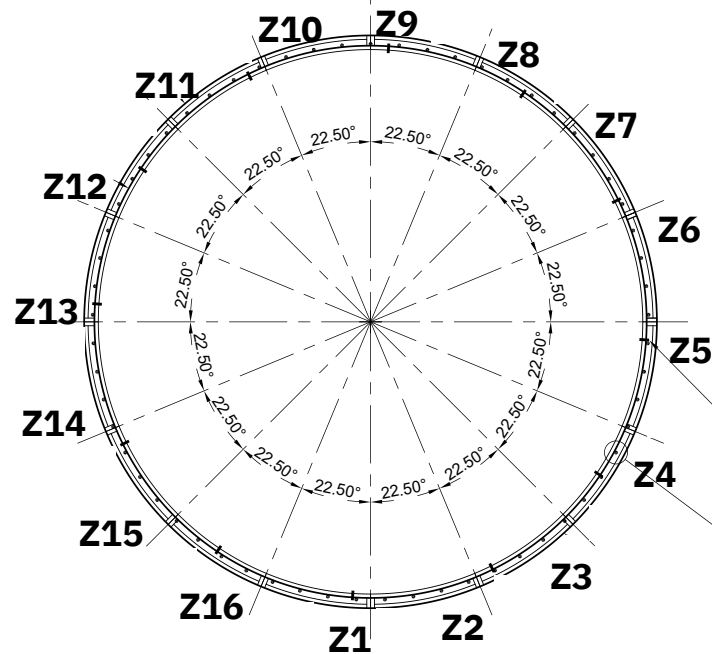


**FRONT VIEW**

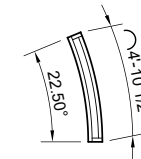
## **BARREL - Z**

**- 16 SECTIONS**

**- 57 BRANCHES**



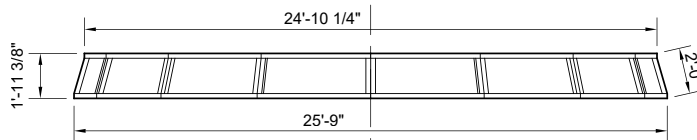
**FRAME TOP VIEW**



**FRAME SECTION**

STEEL CLAMP PLATE  
EVENLY SPACED (SEE DETAIL)  
QUANTITY: 12

BRANCH HOLDER  
QUANTITY: 57



**FRONT VIEW**

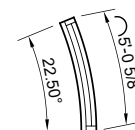
## **BARREL - AA**

**- 16 SECTIONS**

**- 59 BRANCHES**



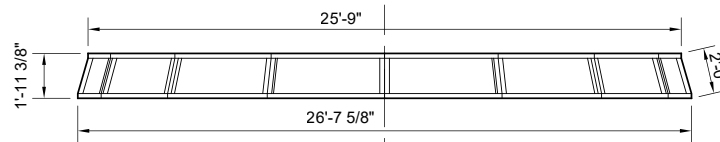
**FRAME TOP VIEW**



**FRAME SECTION**

STEEL CLAMP PLATE  
EVENLY SPACED (SEE DETAIL)  
QUANTITY: 12

BRANCH HOLDER  
QUANTITY: 59



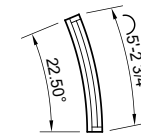
**FRONT VIEW**

## **BARREL - BB**

- 16 SECTIONS
- 61 BRANCHES



**FRAME TOP VIEW**



**FRAME SECTION**

STEEL CLAMP PLATE  
EVENLY SPACED (SEE DETAIL)  
QUANTITY: 12

BRANCH HOLDER  
QUANTITY: 61